

PV2R 系列叶片泵 Series-vane Pumps

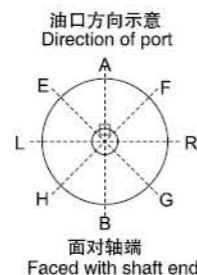


产品简介/Product Introduction

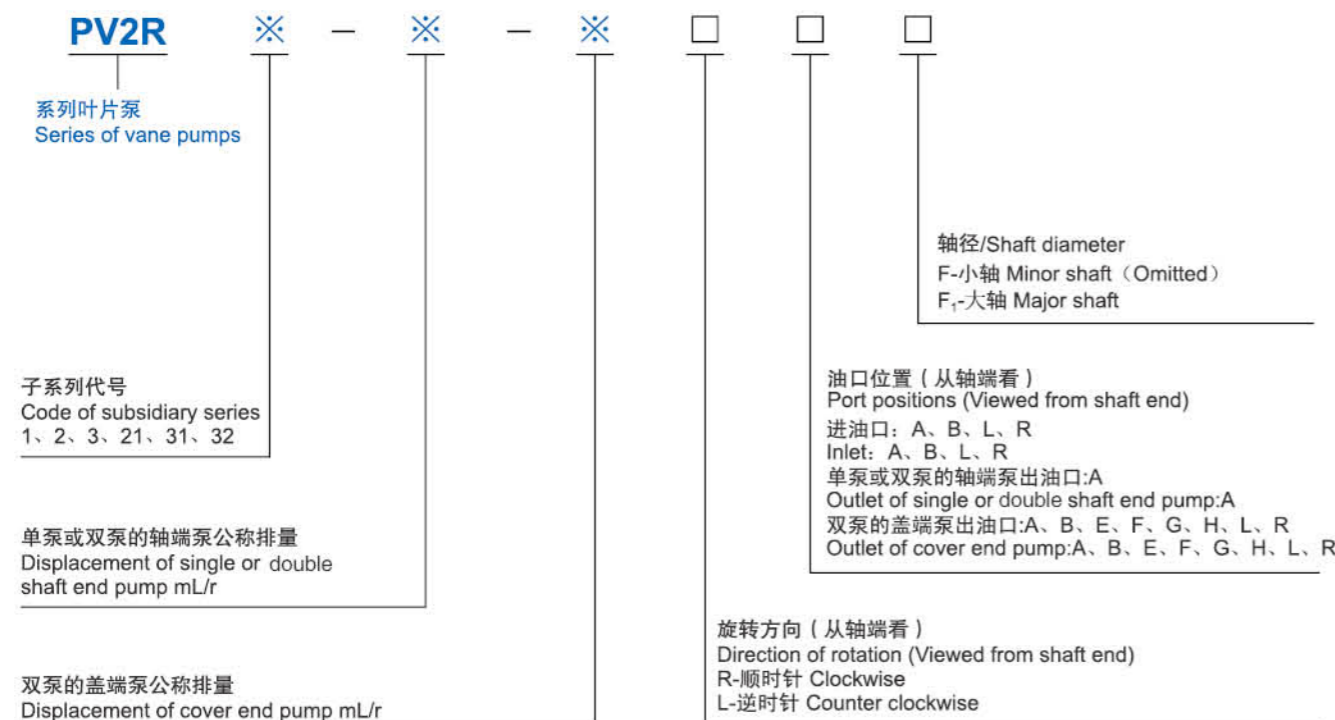
PV2R系列高压低噪声叶片泵是我公司独立研制开发的国产化高性能产品,具有性能先进,结构合理,可靠性好,噪声低,脉动极小,质量稳定的特点。产品精工制造,特别适应高精度低噪声设备的要求,广泛应用于切削机械、塑料机械、皮革机械、锻压机械、工程机械等领域。

PV2R series of vane pumps with high pressure and lower noise are high-performance products, which are developed and domestically produced by our company, featured by advanced performance, reasonable structure, good creditability, lower noise, ultra-low pulse and stable quality and so on. Precisely made, the product can be used in the equipment with high precision and low noise, and is widely used in cutting, plastic, leather, forging and engineering machinery fields, and the like.

油口方向示意图/Direction of port



型号说明/Model Designation



技术规格/Specifications

单泵/Single Pumps

产品型号 Model	理论排量 Displacement (mL/r)	最高压力 Max.pressure(MPa)			允许转速 Speed (r/min)		驱动功率 Input power (kW)
		高压用特定油 Special oil	抗磨液压油 Antiwear oil	普通液压油 Common oil	最低 Min.	最高 Max.	
PV2R1-4	4.3						2.1
PV2R1-6	6.5						3.2
PV2R1-8	8.5						4.5
PV2R1-10	10.8						5.4
PV2R1-12	12.8						6.1
PV2R1-14	14.5	21	17.5	16	750	1800	6.9
PV2R1-17	16.2						7.9
PV2R1-19	20.1						9.6
PV2R1-23	22.5						10.5
PV2R1-25	25.3						12.5
PV2R1-28	29.6						14.0
PV2R1-31	32.3	16	16				15.5
PV2R2-26	25.3						11.7
PV2R2-33	32.3						15.5
PV2R2-41	39.8						18.9
PV2R2-47	49.8	21				1800	23.2
PV2R2-53	51.5						24
PV2R2-59	55.8		17.5	14	600		24.9
PV2R2-65	63.7						29.4
PV2R2-70	70.3						31.6
PV2R2-79	78.1	16				1200	35.7
PV2R2-85	82.7						37.5
PV2R3-52	51.5						23.2
PV2R3-60	63.7						29.4
PV2R3-66	66.6	21	17.5			1800	34.2
PV2R3-76	75.5						37.7
PV2R3-94	89.5			14	600		41.2
PV2R3-116	118						50
PV2R3-125	122.2	16	16			1200	59.9
PV2R3-136	136						66.7

- 注: 1. 公称排量“4”、“6”、“8”泵, 压力超过16MPa使用时, 转速应超过1450r/min。
2. 在高转速下使用大排量单泵及相应的双泵时, 应减少吸入口负压。
3. 使用合成液液压油及含水液液压油时, 最高转速限制在1200r/min。
4. 对于特别要求低噪音的场合, 建议工作转速选用1000r/min。
5. 噪声值是在P=14MPa、n=1200r/min的工况下。
6. 驱动功率是在P=16MPa、n=1500r/min的工况下。
- Note: 1. When pressure of pumps exceeds 16MPa, with displacement of "4" "6" "8", speeds should be more than 1450r/min.
2. Reduce the negative pressure of the inlet when the single pumps or double pumps with large displacement at high speed.
3. In use of synthetic hydraulic fluids and water containing hydraulic fluids, limit the max speed at 1200r/min.
4. Speed at 1000r/min is suggested on occasions with lower noise strictly required.
5. Noisiness is available in working conditions of 14MPa and 1200r/min.
6. Input power is available in working conditions of 16MPa and 1500r/min.

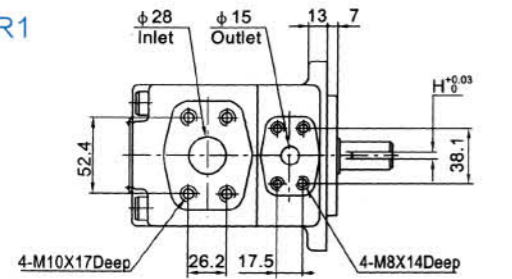
双联泵/Double Pumps

泵系列号 Series	轴端泵排量 Displacement of shaft end pump	盖端泵排量 Displacement of cover end pump
PV2R21	26、33、41、47、53、59、65	4、6、8、10、12、14、17、19、23、25、28、31
PV2R31	52、60、66、76、94、116、125、136	4、6、8、10、12、14、17、19、23、25、28、31
PV2R32	52、60、66、76、94、116、125、136	26、33、41、47、53、59、65

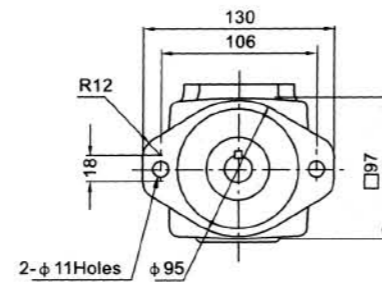
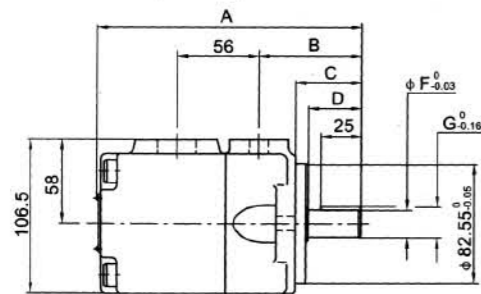
外型尺寸/Installation Dimensions

单泵/Single Pumps

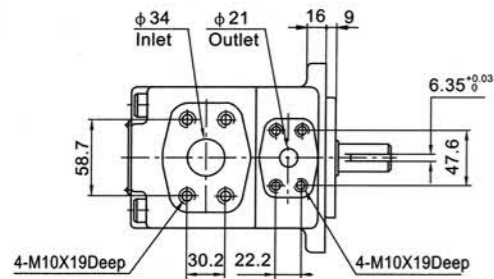
PV2R1



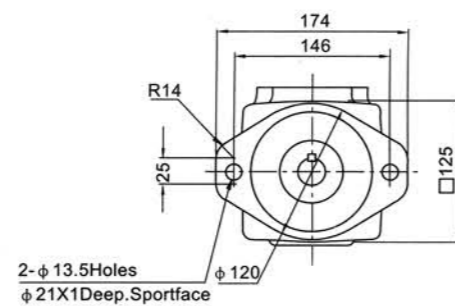
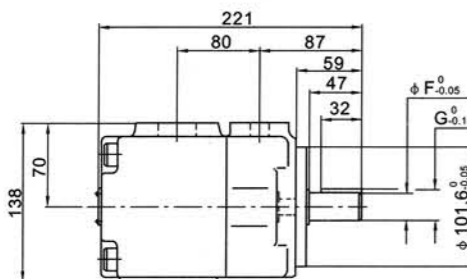
轴伸形式 Shaft type	A	B	C	D	F	G	H
F1	178.5	69.5	44.5	36	19.05	21.24	4.76
F	184	75	50	41	15.88	17.68	3.97



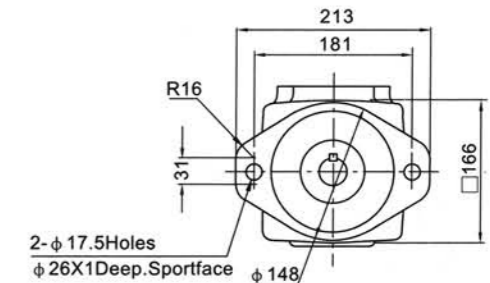
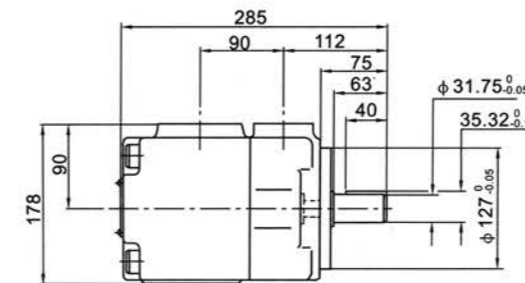
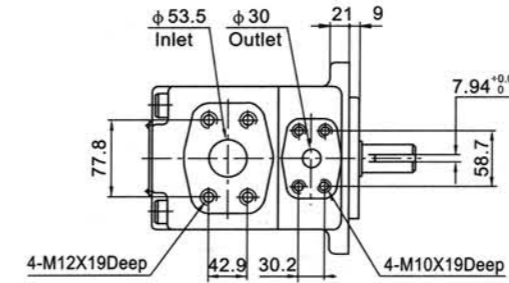
PV2R2



轴伸形式 Shaft type	F	G
F1	25.4	28.18
F	22.23	25.01



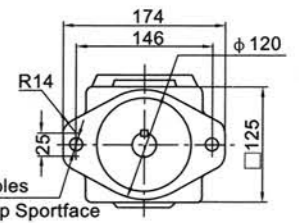
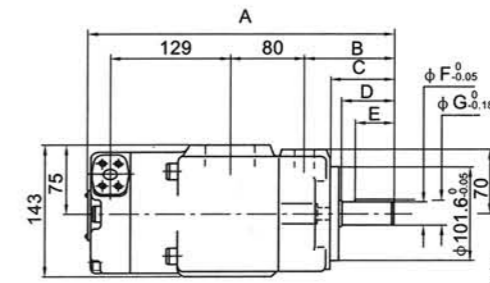
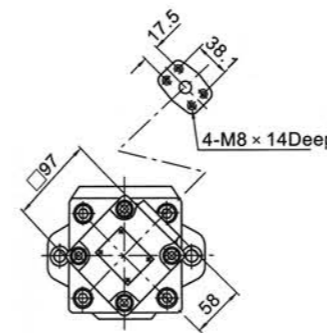
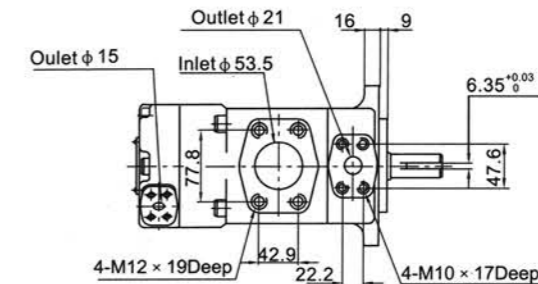
PV2R3



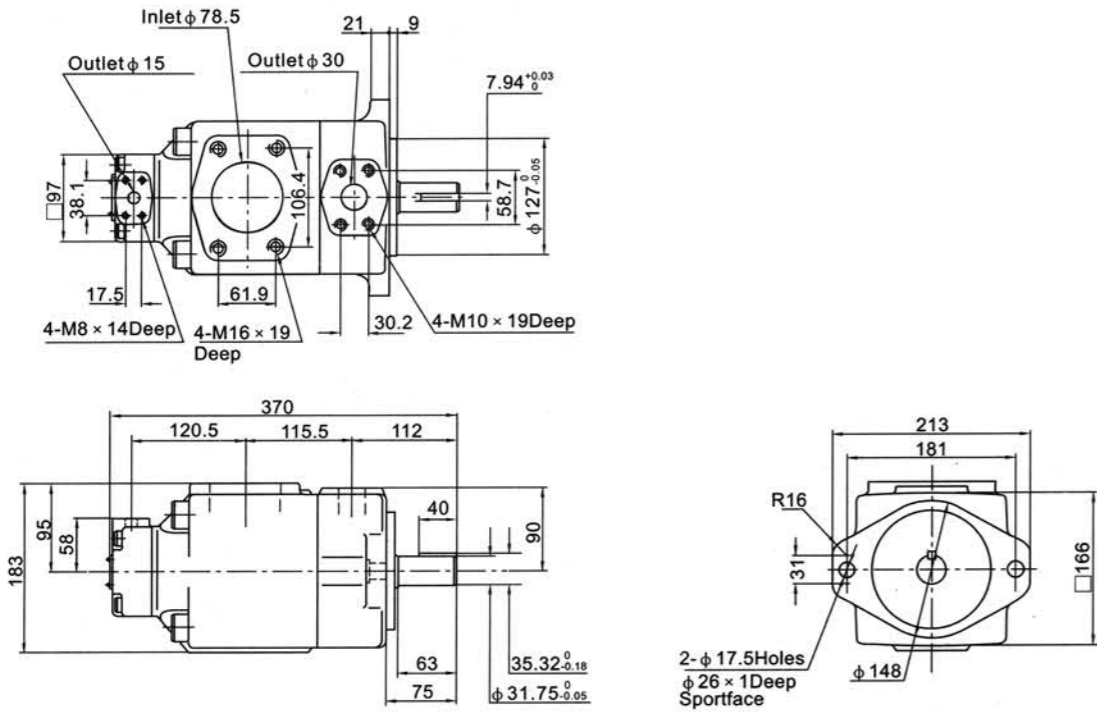
双联泵/Double Pumps

PV2R21

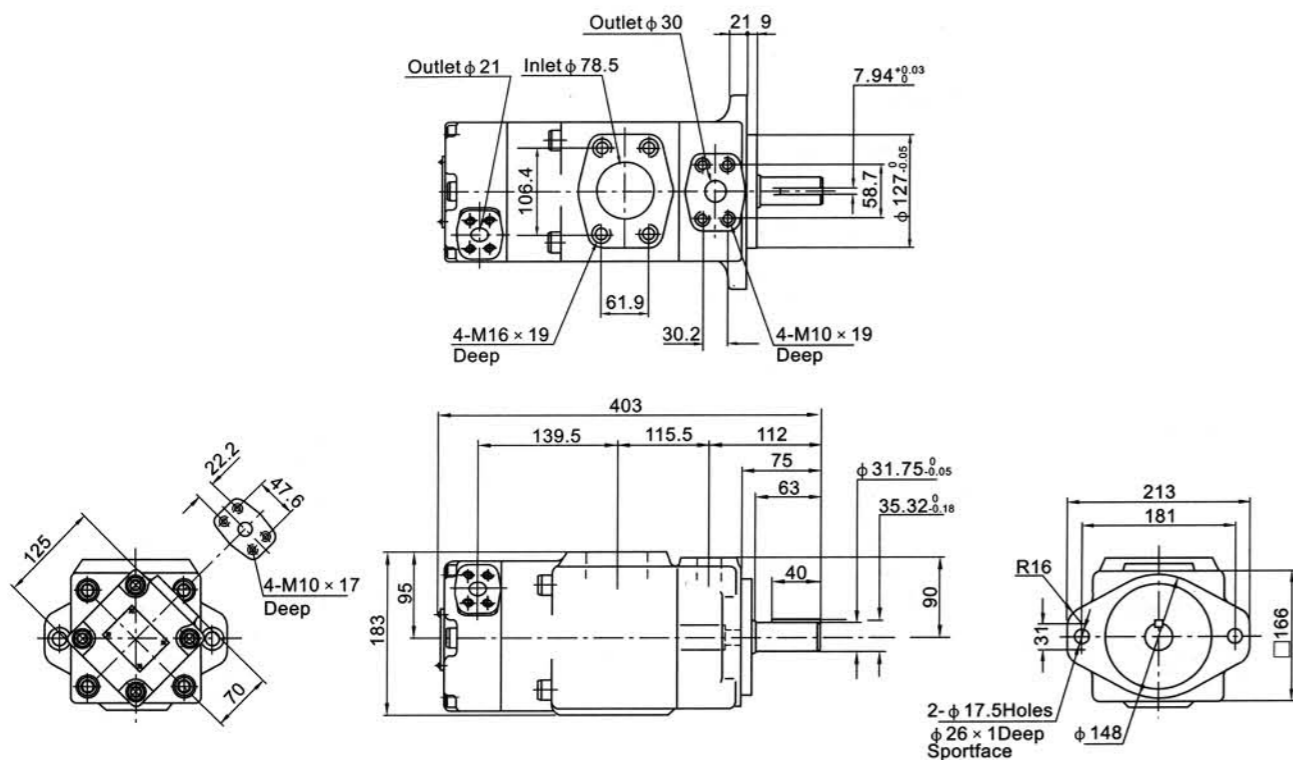
轴伸形式 Shaft type	A	B	C	D	E	F	G
F1	326	95	67	55	40	25.4	28.18
F	318	87	59	47	32	22.23	25.01



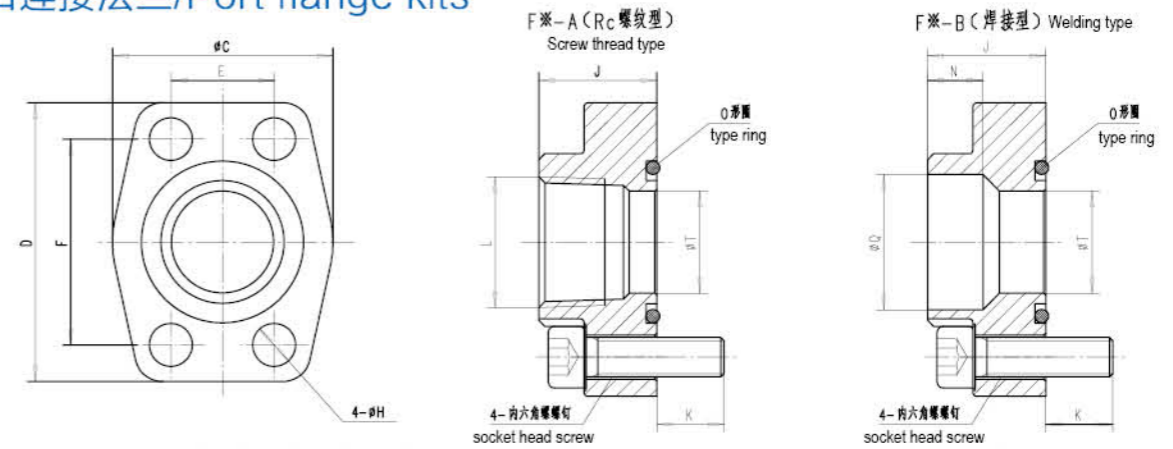
PV2R31



PV2R32



油口连接法兰/Port flange kits



法兰型号 Flange model	对应管子规格 Corresponding pipe specifications	尺寸/Dimensions mm										O形圈/ Ring GB3452.1-2005	PV2R系列/Series		
		C	D	E	F	H	J	L	N	Q	T		内六角螺钉 socket head screw	尺寸 Dimensions K	对应油泵接口 Corresponding oil pump interface
F04-A	1/2"	40	54	17.5	38.1	9.0	27	Rc1/2"	-	-	13	21.2x2.65	M8x30mm	12.5	PVR1 出油口/outlet, PV2R21, PV2R31 盖端泵出油口/outlet of cover end pump
F04-B								-	11	22.5					
F06-A	3/4"	50.5	65.5	22.2	47.6	11.0	28	Rc3/4"	-	-	19	30x3.55	M10x30mm	12.5	PVR2 出油口/outlet, PV2R21 泵端泵出油口/outlet of shaft end pump, PV2R32 盖端泵出油口/outlet of cover end pump
F06-B								-	12	28.5					
F08-A	1"	56	71	26.2	52.4	11.0	30	Rc1"	-	-	26	34.5x3.55	M10x35mm	17.0	PVR1 吸油口/inlet port
F08-B								-	14	34.5					
F10-A	1-1/4"	64.5	79.5	30.2	58.7	12.0	32	Rc1-1/4"	-	-	32	40x3.55	M10x40mm	19	PVR2 吸油口/inlet port, PV2R3 出油口/outlet, PV2R31, PV2R32 轴端泵出油口/outlet of shaft end pump
F10-B								-	16	43.0					
F12-A	1-1/2"	71	94	35.7	69.9	13.8	37	Rc1-1/2"	-	-	38	50x3.55	-	-	-
F12-B								-	18	49.1					
F16-A	2"	87.5	103	42.9	77.8	13.8	38	Rc2"	-	-	51	65x3.55	M12x45mm	17.5	PVR3, PV2R21 吸油口/inlet
F16-B								-	20	61.0					
F20-A	2-1/2"	96	115	50.8	88.9	13.8	42	Rc2-1/2"	-	-	63	75x3.55	-	-	-
F20-B								-	22	77.1					
F24-A	3"	123	136	61.9	106.4	17.0	45	Rc3"	-	-	76	85x3.55	M16x45mm	16.5	PVR31, PV2R32 吸油口/inlet
F24-B								-	25	90.0					
F28-A	3-1/2"	135	153	69.9	120.7	17.5	46	Rc3-1/2"	-	-	89	100x3.55	-	-	-
F28-B								-	20	102.8					
F32-A	4"	145	162	77.8	130.2	17.0	50	Rc4"	-	-	102	115x3.55	-	-	-
F32-B							40	-	28	115.5					

法兰型号 Flange model	V, VQ, SQP, T6 系列/Series		
	内六角螺钉 socket head screw	尺寸 K Dimensions	对应油泵接口 Corresponding oil pump interface
F04-A	-	-	-
F04-B	-	-	-
F06-A	3/8"-16UNCx1.5" (38.1mm)	20.6	20V(Q), SQP1 出油口/outlet, 2520V(Q), 3520V(Q), 4520V(Q), SQP21, SQP31, SQP41, T6CC (油口尺寸 01, 11/oil port dimensions), T6DCC(油口尺寸 01/oil port dimensions), T6DDCS(油口尺寸 01/oil port dimensions), T6EDC(S)(油口尺寸 01/oil port dimensions) 盖端泵出油口/outlet of cover end pump
F06-B	3/8"-16UNCx1.5" (38.1mm)	20.1	25V(Q), SQP2, T6C 出油口/outlet port, 2520V(Q), SQP21, T6CC 轴端泵出油口/outlet of shaft end pump, 3525V(Q), 4525V(Q), SQP32, SQP42, T6CC(油口尺寸 00, 10/oil port dimensions), T6EC, T6DCC (油口尺寸 00/oil port dimensions), T6DDCS (油口尺寸 00/oil port dimensions), T6EDC(S) (油口尺寸 00/oil port dimensions) 盖端泵出油口/outlet of cover end pump, T6DCC 中间泵出油口/outlet of middle pump
F08-A	7/16"-14UNCx1.575" (40mm)	19.0	SQP1 吸油口/inlet, 35V(Q), SQP3, T6D 出油口/outlet, 3520V(Q), 3525V(Q), SQP31, SQP32, T6DC, T6DCC, T6DDCS 轴端泵出油口/outlet of shaft end pump, 4535V(Q), SQP43, T6ED 盖端泵出油口/outlet of cover end pump, T6DDCS, T6EDC(S) 中间泵出油口/outlet of middle pump
F10-A	1/2"-13UNCx1.75" (44.5mm)	19.0	20V(Q), 25V(Q), SQP2, T6C 吸油口/inlet, 45V(Q), SQP4, T6E 出油口/outlet, 4535V(Q), SQP43, T6EC, T6ED, T6EDC(S) 轴端泵出油口/outlet of shaft end pump
F10-B	1/2"-13UNCx1.75" (44.5mm)	17.0	35V(Q), SQP3, T6D 吸油口/inlet
F12-A	1/2"-13UNCx1.75" (44.5mm)	16.5	2520V(Q), SQP21, T6CC(油口尺寸 10, 11/oil port dimensions) 吸油口/inlet
F12-B	1/2"-13UNCx1.75" (44.5mm)	16.5	2520V(Q), SQP21, T6CC(油口尺寸 10, 11/oil port dimensions) 吸油口/inlet
F16-A	5/8"-11UNCx2" (50.8mm)	22.3	45V(Q), SQP4, T6E 吸油口/inlet, 3520V(Q), 3525V(Q), SQP31, SQP32, T6CC (油口尺寸 00, 01/oil port dimensions), T6DC 吸油口/inlet
F16-B	5/8"-11UNCx2" (50.8mm)	22.3	4520V(Q), 4525V(Q), SQP41, SQP42, T6EC 吸油口/inlet
F20-A	5/8"-11UNCx2" (50.8mm)	19.3	4535V(Q), SQP43, T6ED, T6DCC, T6DDCS, T6EDC(S) 吸油口/inlet
F20-B	5/8"-11UNCx2" (50.8mm)	23.0	4535V(Q), SQP43, T6ED, T6DCC, T6DDCS, T6EDC(S) 吸油口/inlet