

花键轴参数/Splined Shaft Type

V10

11型轴
No.11 shafts

38型轴
No.38 shafts

V20

11型轴
No.11 shafts

38型轴
No.38 shafts

62型轴
No.62 shafts

V2010
V2020

11型轴
No.11 shafts

渐开线花键参数表/Involute spline data table

型号 Model	轴伸代号 Shaft code	齿数 Number of teeth	径节 Pitch	齿顶圆直径 Major diameter	节圆直径 Pitch diameter	齿根圆直径 Minor diameter	配合形式 Suitable for
V10	11	9	16/32	15.82/15.80	14.29	12.28/12.00	齿顶 Tooth tip
	38	11	16/32	18.63/18.50	17.46	15.24/14.99	齿侧 Side tip
V20	11	11	16/32	19.01/18.93	17.46	15.90/15.62	齿侧 Side tip
	38	11	16/32	18.63/18.50	17.46	15.24/14.99	齿侧 Side tip
V2010 V2020	62	9	16/32	15.82/15.80	14.29	12.28/12.00	齿顶 Tooth tip
	11	13	16/32	22.17/22.15	19.03	18.63/18.35	齿顶 Tooth tip

SQP 系列叶片泵-适合工业应用的更低噪音的字母叶片泵 Series-vane Pumps

-Applicable to industrial applications of the cluster of lower noise vane pump

本系列是专为低噪音工况而开发的高压高性能字母叶片泵。适用于塑料机械, 压铸机械, 机床以及工程机械等要求噪音较低的液压系统中。

其主要特点:

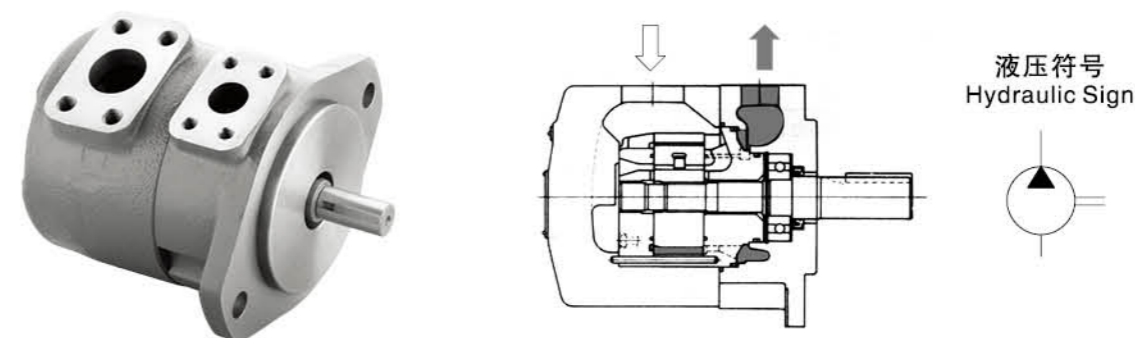
- 1、泵芯使用V系列字母叶片泵泵芯,完全互换,使用更灵活方便。
- 2、增加了脉动衰减结构的设计,极大降低了压力的脉动,使噪音更低,音质更流畅。
- 3、使用加厚的外壳设计,增加了泵的强度和抗振性,同时消音性能更优越。

This series vane pumps are high pressure and high performance intra-vane pumps, which are specially developed for low noise working condition. They are widely applied in hydraulic system for machine-tools, presses, die casting machines, engineering plastic injection moulding and other machineries, which call for lower noise.

Main Features:

1. Cartridge kits are entirely similar to those of Vickers stable V series pumps which can be interchanged with cartridge kits of SQP series.
2. New configuration design gets an excellent performance in restraining pulsing and noise.
3. Strengthened pump housing design offers a better anti-vibration ability, which effect the remarkable low noise.

SQP 系列单泵 Series-single Pumps



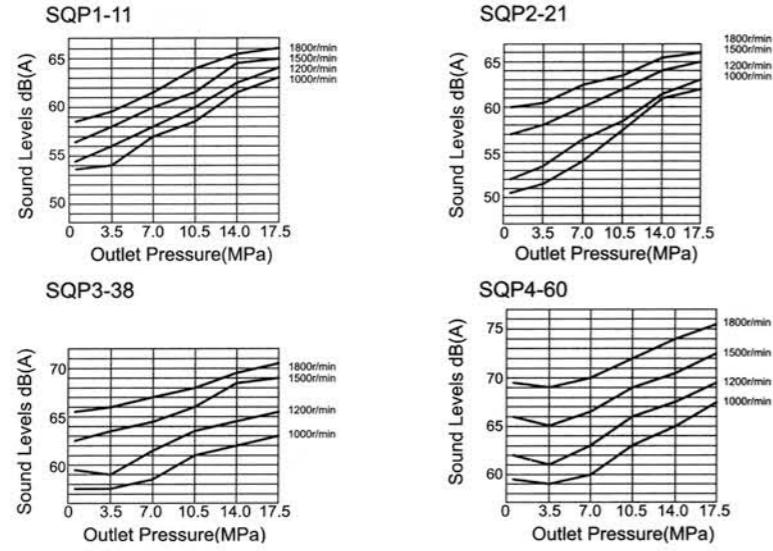
型号说明/Model Designation

(F3-)	SQP2	-21	-1	C	(F)	-(LH)	-18
前注、油液相溶性 Infuse front, oil intermiscibility	系列号 Series	▲排量代号 Displacement code	轴伸形式 Shaft type	出油口位置 Outlet positions	安装形式 Installation type	旋转方向 Rotation	设计号 Design number
无标记- 抗磨液压油、 水-乙二醇液或 油包水乳化液 No-marking: Anti-wear hydraulic oil, Water glycol fluid or water-oil emulsions F3- 磷酸酯液 phosphate ester fluid	SQP1	2, 3, 4, 5, 6, 7, 8, 9, 10, 11, 12, 14	1-带键直轴 Belt key straight shaft	(从泵的盖端看) (Viewed from cover end of pump) A-进油口对面 Opposite inlet B-从进油口逆时针90° 90° CCW from inlet C-进油口同侧 Inline with inlet D-从进油口顺时针90° 90° CW from inlet	无标记 No-marking: 法兰安装型 Flange Mounting F-脚座安装型 F-Foot Mounion	(从泵的轴端看) (Viewed from shaft end of pump) LH-逆时针旋转 Left hand for counter clockwise 无标记-顺时针旋转 No-marking-Rihgt hand for clockwise	15
	SQP2	10, 12, 14, 15, 17, 19, 21, 25	86-重型带键 直轴 Heavy belt key straight shaft				18
	SQP3	21, 25, 30, 32, 35, 38, 45					
	SQP4	42, 45, 50, 57, 60, 66, 75					

▲ 在1200r/min和0.69MPa(100psi)下的额定排量。
USgpm Flow(USgpm) at 1200r/min and 0.69MPa.

噪音数据/Noise Data

测试条件ISO VG32, (50°C), 距离1m Test condition ISO VG32, (50°C), distance 1m

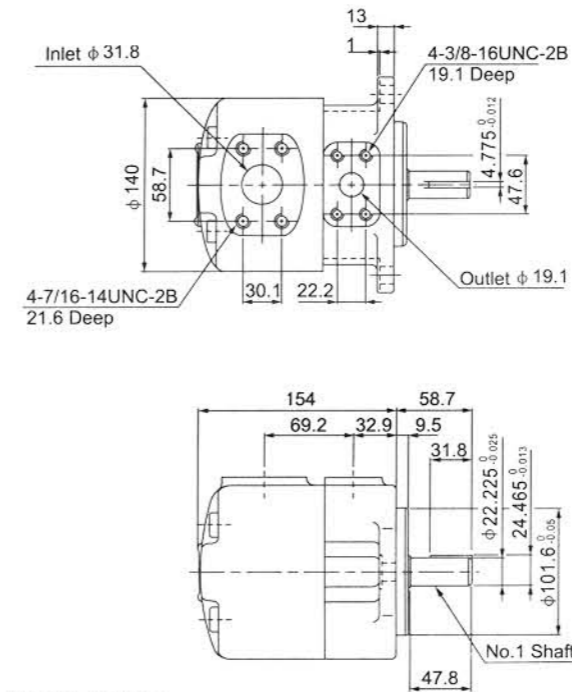


技术参数/Technical Data

系列号 Series	● 排量代号 Displacement code	几何排量 Geometric displacement mL/r	▲ 使用抗磨液压油或磷酸酯液 With antiwear hydraulic oil or phosphate ester fluid		使用水乙二醇液 With water glycol fluid		使用油包水乳化液 With water-oil emulsions		最低转速 Min. speed r/min
			最高压力MPa Max. pressure	最高转速r/min Max. speed	最高压力MPa Max. pressure	最高转速r/min Max. speed	最高压力MPa Max. pressure	最高转速r/min Max. speed	
SQP1	2	7.5	13.8	1800	13.8	1200	6.9	1200	600
	3	10.2							
	4	12.8							
	5	16.7							
	6	19.2							
	7	22.9							
	8	26.2							
	9	28.8							
	10	31.0							
	11	35.0							
	12	37.9							
SQP2	14	44.2	17.2	1800	15.9	1200	6.9	1200	600
	10	32.5							
	12	38.3							
	14	43.3							
	15	46.7							
	17	52.5							
	19	59.2							
SQP3	21	65.0	17.2	1800	15.9	1200	6.9	1200	600
	25	79.2							
	21	66.7							
	25	79.2							
	30	95.0							
	32	100							
SQP4	35	109	17.2	1800	15.9	1200	6.9	1200	600
	38	118							
	45	140							
	42	134							
	45	140							
	50	156							
	57	178							
60	189								
66	207								
75	237								

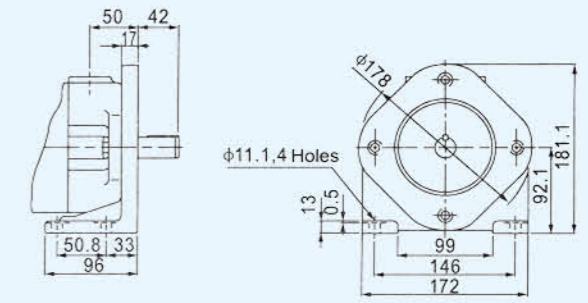
● 在1200r/min和0.69MPa(100psi)下的额定排量 USgpm Flow(USgpm) at 1200r/min and 0.69MPa
▲ 0.5秒内, 允许超过最高压力10%的瞬时压力。 Permit surpassing the top pressure 10% instantaneous pressure, within 0.5 Second.

SQP1 法兰安装尺寸
Flange Mounting

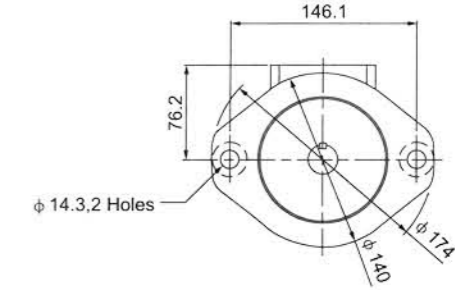


其它轴类尺寸见68页
For other shaft dimensions, refer to page 68

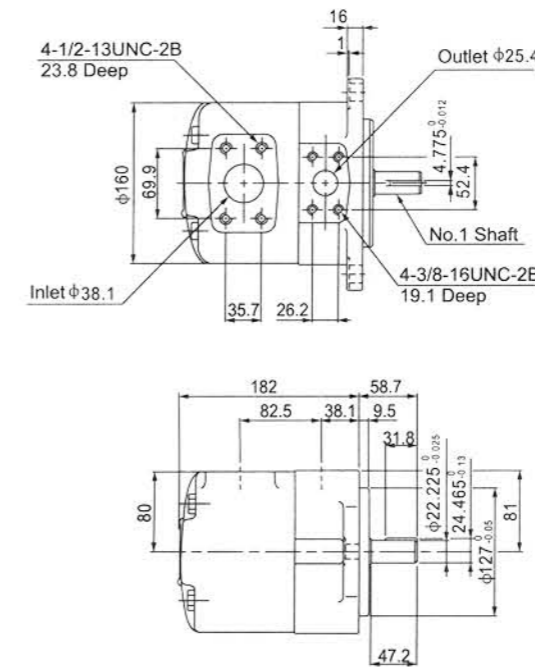
SQP1 脚座安装尺寸
Foot Mounting



For other dimensions, refer to "Flange Mounting" type

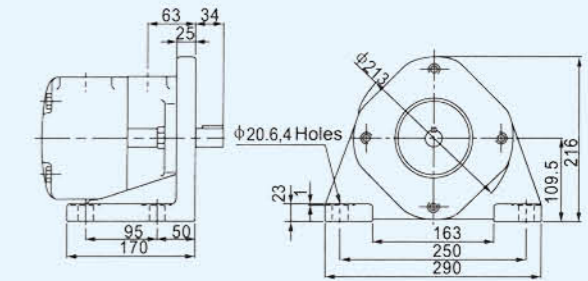


SQP2 法兰安装尺寸
Flange Mounting

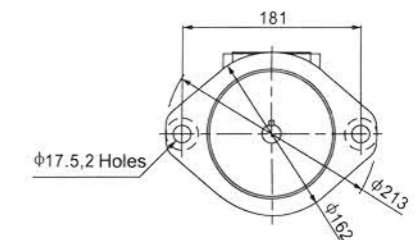


其它轴类尺寸见68页
For other shaft dimensions, refer to page 68

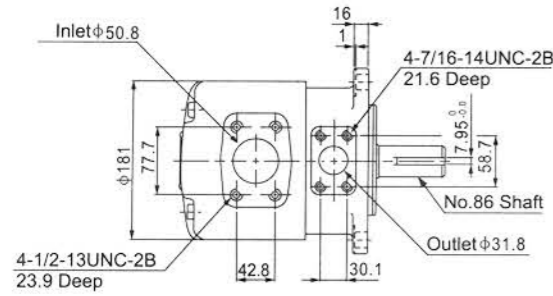
SQP2 脚座安装尺寸
Foot Mounting



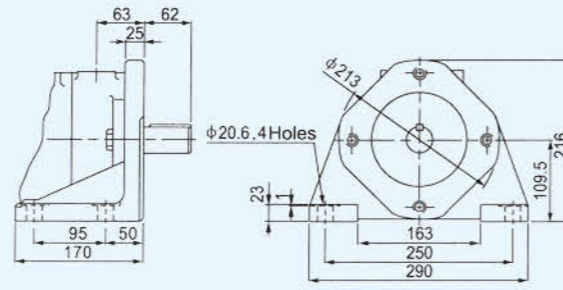
For other dimensions, refer to "Flange Mounting" type



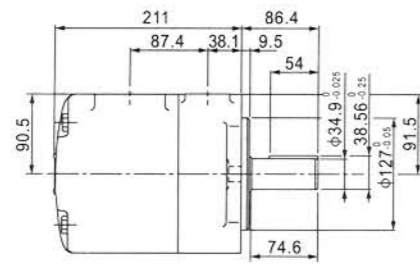
SQP3 法兰安装尺寸
Flange Mounting



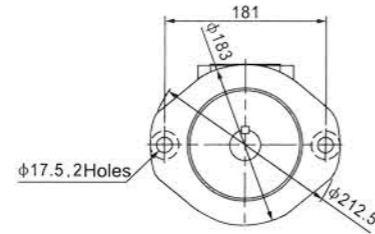
SQP3 脚座安装尺寸
Foot Mounting



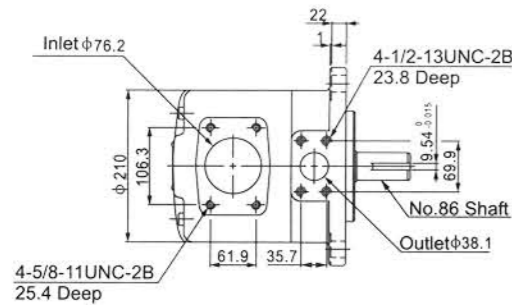
For other dimensions, refer to "Flange Mounting" type



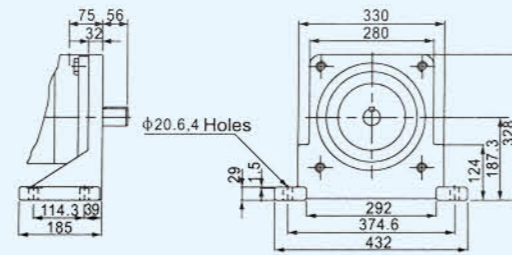
其它轴类尺寸见68页
For other shaft dimensions, refer to page 68



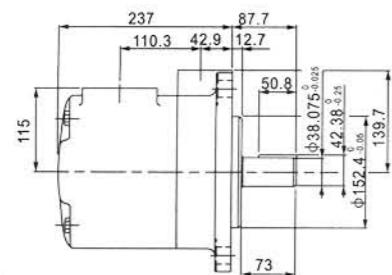
SQP4 法兰安装尺寸
Flange Mounting



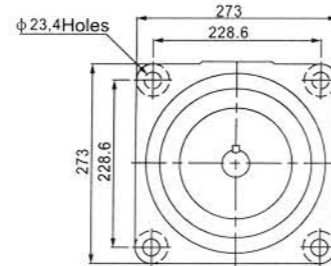
SQP4 脚座安装尺寸
Foot Mounting



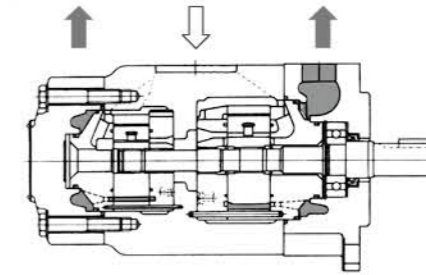
For other dimensions, refer to "Flange Mounting" type



其它轴类尺寸见68页
For other shaft dimensions, refer to page 68



SQP 系列双联泵
Series-double Pumps



型号说明/Model Designation

(F3-)	SQP32	-35	-17	-86	CD	(F)	-(LH)	-18
前注、油液相溶性 Infuse front, oil intermiscibility	系列号 Series	▲排量代号轴端泵 Displacement code of shaft end pump	▲排量代号盖端泵 Displacement code of cover end pump	轴伸形式 Shaft type	油口位置 Port positions	安装形式 Installation type	旋转方向 Rotation	设计号 Design number
无标记- 抗磨液压油、 水-乙二醇液或 油包水乳化液 No-marking: Anti-wear hydraulic oil, Water glycol fluid or water-oil emulsions F3- 磷酸酯液 phosphate ester fluid	SQP21 SQP31 SQP32 SQP41 SQP42 SQP43	10, 12, 14, 15, 17, 19, 21, 25 21, 25, 30, 32, 35, 38, 45 21, 25, 30, 32, 35, 38, 45 42, 45, 50, 57, 60, 66, 75 42, 45, 50, 57, 60, 66, 75 42, 45, 50, 57, 60, 66, 75	2, 3, 4, 5, 6, 7, 8, 9, 10, 11, 12, 14 2, 3, 4, 5, 6, 7, 8, 9, 10, 11, 12, 14 10, 12, 14, 15, 17, 19, 21, 25 2, 3, 4, 5, 6, 7, 8, 9, 10, 11, 12, 14 10, 12, 14, 15, 17, 19, 21, 25 21, 25, 30, 32, 35, 38, 45	1-带键直轴 Belt key straight shaft 86-重型带键直轴 Heavy belt key straight shaft	见下表 See below	无标记 No-marking: 法兰安装型 Flange Mounting F- 脚座安装型 F-Foot Mounion	(从泵的轴端看) (Viewed from shaft end of pump) LH-逆时针旋转 Left hand for counter clockwise 无标记-顺时针旋转 No marking-Rihgt hand for clockwise	18

▲在1200r/min和0.69MPa(100psi)下的额定排量。
USgpm Flow(USgpm) at 1200r/min and 0.69MPa.

噪音数据/Noise Data

测试条件ISO VG32, (50°C), 距离1m Test condition ISO VG32, (50°C), distance 1m

